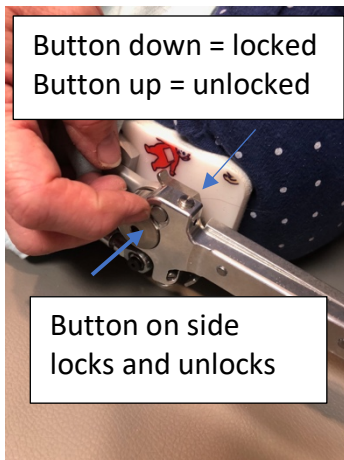


### Reciprocating Gait Orthosis – RGO – How to put on

1. Place RGO on bed or flat surface. Lay Amelia down with her AFO's and shoes on with her back in the plastic torso. Unlock the hip section to allow the hips to flex to easily place her legs in the boots.



2. Slide her AFO's and shoes into the boots on both sides
3. Sit Amelia up and move her to the end of the bed so the knees can unlock



Button up = unlocked  
Allows her to sit

4. Lift drop locks on either knee joint to allow her knees to bend. Knees must be fully extended to lock and unlock the joints. If she is tight, press on the front of the thigh to straighten the leg. Do up straps on boots.



5. Lock hips and knee joint prior to standing.



TO AMBULATE:

- RGO works by laterally shifting her weight (to the side) and leaning backwards (back extension). When she leans to the side and back, the opposite leg will swing through

CLEANING:

- Spray the inside with rubbing alcohol and wipe dry to remove body oils and residue. It can be cleaned by wiping it out with a damp towel and anti-bacterial soap or anti-bacterial moist towelettes
- Do not immerse in water and keep device away from excessive heat to prevent damage to plastic

If you have any questions or concerns please do not hesitate to reach out.

Dawn MacArthur Turner  
519-850-4721  
dawn@customorthoticsoflondon.com